



Applied Controls is a high-tech automation distributor and solutions provider. As a distributor and solutions provider, Applied Controls educates and supports local manufacturers in implementing emerging technologies to reduce costs, increase productivity, and improve safety. Our core offerings range from industrial computers and software, Robotics, Machine Vision, and Motion Control, and our goal is to increase productivity to keep manufacturing in America successful and prosperous.



appliedc.com  
610-408-8000

Malvern  
610-408-8000  
The Commons at Great Valley  
47 General Warren Boulevard  
Malvern, PA 19355



## Products

We work with the finest, most reliable suppliers in the world, providing our customers immense value in their automation projects.

### Core Products

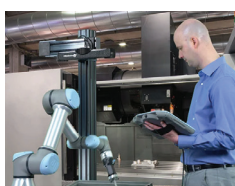
- Factory Automation Components and Software
- Industrial Control Products
- Ethernet: Switches, Wireless AP/Clients,
- Cable / Connectors
- Human Machine Interfaces
- Safety Integrated Components
- Programmable Logic Controllers
- Industrial Computers
- General Purpose Motion Control
- Enclosures
- Motors and Geared Motors
- Safety Interlocking Systems
- Climate Control for Enclosures
- R.F.I.D.
- Servo and Variable Frequency Drives
- Power Distribution Equipment
- Industrial Networks
- Machine Vision
- Robotics

## Solutions

The Applied Controls Solutions group can help optimize your operation processes. With a strong network of world-class partners and over 50 years of engineering experience, we provide customized solutions to drive your business forward. Our knowledge in automation, robotics, and vision fuels innovative automation systems, enabling companies to thrive in terms of pricing, quality, and on-time deliveries.



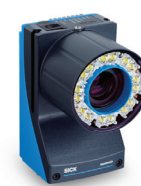
**PALLETIZING**



**MACHINE TENDING**



**MATERIAL HANDLING**



**QUALITY INSPECTION**



**BAR CODE READING**



**CONVEYANCE**



**PACKAGING**



**WELDING**

**SIEMENS**

**SICK**  
Sensor Intelligence.

**UNIVERSAL ROBOTS**

## OUR PARTNERS



SIEMENS

**SICK**  
Sensor Intelligence.

 **UNIVERSAL ROBOTS**

**Nidec**



**WAGO**

 **PEPPERL+FUCHS**

 **APEX DYNAMICS USA**

 **AUTOMATIC  
TIMING &  
CONTROLS**



**RL**  
RED LION™

**ELETTROTEK KABEL**  
NORTH AMERICA

 **ENCODER**  
PRODUCTS COMPANY

 **Edmund**  
optics | worldwide

**EUCHNER**

**EXLAR**

 **HAMMOND  
MANUFACTURING**

 **hilscher**

 **LAPP**

 **MACRON DYNAMICS, INC.**

**MENCOM**  
CORPORATION

 **METAPHASE**  
LIGHTING TECHNOLOGIES

 **murrplastik**

**NOSHOK**

 **robot**

**PALETTI**

**PATLITE**

 **POSITAL**

 **ROBOTIQ**

 **ROBOTUNITS**

**Satie**  
SYSTEM

optimize!  
**softing**

**STAHL**

 **STOBER**

**tosi**

 **WERMA**

**ZIMMER**  
group

 **APPLIED CONTROLS**  
a SunSource Company