

TURCK

Your Global Automation Partner

 **ELECTRO-MATIC**
a SunSource Company

Focus+ Products Overview



Table of Contents

Focus+ Program Introduction	3
M8 Connectivity Family	4
M8 Straight Cordsets - Yellow PVC Jacket/Yellow Plug Body	4
M8 Front Mount Receptacles	5
M8 Splitters	5
M8 Field Wireables	6
M8 Closure Caps	6
M12 Connectivity Family	7
M12 Straight Cordsets - Black PVC Jacket/Black Plug Body	7-8
M12 Straight Cordsets - Gray PVC Jacket/Yellow Plug Body	8
M8 to M12 Straight Cordsets - Yellow PVC Jacket/Yellow Plug Body	9
M12 Receptacles	9-10
M12 Splitters	10
M12 Junction Box	11
M23 Homerun Cables	11
M12 Field Wireables	12
M12 Closure Caps	12
Minifast Connectivity Family	13
7/8" Minifast Straight Cordsets - Yellow PVC Jacket/Yellow Plug Body	13-14
7/8" Minifast Front Mount Receptacles	14
7/8" Minifast Tees	15
7/8" Minifast Field Wireables	15
7/8" Minifast Closure Caps	16
Ethernet Connectivity Family	17
Industrial Ethernet Straight Cordsets - Teal TPE Jacket/Blue-Gray Plug Body	17-18
Ethernet Panel, Receptacles & Field Wireable Accessories	19
PROFINET Connectivity Family	20
PROFINET Straight Cordsets – Green TPE Jacket/Black Plug Body	20
Industrial Cable	21
Cut to Length Cable	21-22
Inductive Proximity Sensors	23
Inductive Sensors, 12 mm Barrel	23
Inductive Sensors, 18 mm Barrel	24
Inductive Sensors, 30 mm Barrel	25
Inductive Sensors, Rectangular	26
Fieldbus Solutions	27
Compact Multiprotocol I/O Module & Station	27
Multiprotocol IO-Link Master	28
IO-Link Hubs	28

Focus+ Program Introduction

Turck's Focus+ Program – Where the Focus is on Your Success

Turck recognizes that product reliability and availability are two cornerstones of a successful business. Whether you are a distributor, OEM, manage a warehouse distribution center, or oversee a large factory, Turck's Focus+ program serves as reliable source for some of our most used automation solutions.

What is Focus+?

This new Focus+ offering is a highly managed stocking program with a commitment from Turck to ensure reliable product availability and timely replenishment. Maintaining the right level of inventory and procurement is key. We have narrowed down the product offering for this program to our most popular sensor, fieldbus and connectivity cordsets, splitters, raw cable lengths and more. Our focus will be on this curated group of solutions that will cover a wide range of applications.

Benefits:

- Creates more reliability and stability around available products
- Ensures restocking based on demand, minimizing disruption
- Focuses on solutions that are ready to be shipped quickly
- Meets the needs of a wide range of applications
- Partners with our distributors to ensure a healthy ready-to-ship inventory
- Provides minimal lead times

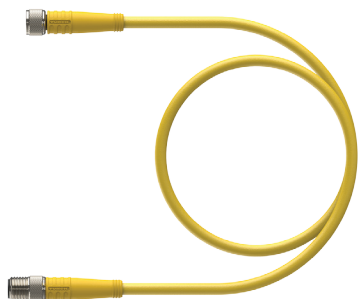


M8 Connectivity Family

M8 Straight Cordsets - Yellow PVC Jacket/Yellow Plug Body

Turck's Focus+ series of compact M8 connectors and cordsets offer 3- and 4-pin versions in a range of straight male or female types. All cordsets are rated IP68 for harsh environments. This general-purpose cable comes in a yellow PVC jacket and offers 24–26 gauge wires, TPU plug body and threaded metal coupling nuts. These Focus+ solutions carry a -40 cold bend cable rating and multiple flame ratings. We use the highest quality cable, plastics and metal components for longevity and durability. Adherence to international design standards and approvals offers peace of mind for international solutions.

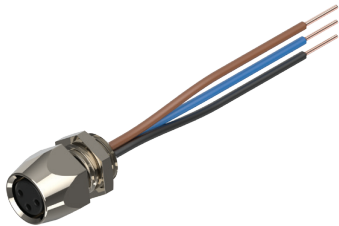
- Compact size to fit applications with a tight footprint
- Versions that are cold bend and flame rated for application flexibility
- IP68 for harsh environments
- Multiple approvals: UL 2238, CSA C22.2 No. 182.3, CE, UKCA, RoHS
- Variants that are Flexlife® and C-Track Approved



Material ID	Part Number	Pin Count	Cable Length	Gender	Orientation	Cable Type
U2515-29	PKG 3M-2	3-pin	2 m	Female	Straight	PVC/Yellow
U2515-71	PKG 3M-5	3-pin	5 m	Female	Straight	PVC/Yellow
U2515-22	PKG 3M-10	3-pin	10 m	Female	Straight	PVC/Yellow
U0135-6	PSG 3M-2	3-pin	2 m	Male	Straight	PVC/Yellow
U0135-66	PSG 3M-5	3-pin	5 m	Male	Straight	PVC/Yellow
U0135-5	PSG 3M-10	3-pin	10 m	Male	Straight	PVC/Yellow
U2515-84	PKG 3M-1-PSG 3M	3-pin	1 m	Extension	Straight	PVC/Yellow
U2515-20	PKG 3M-2-PSG 3M	3-pin	2 m	Extension	Straight	PVC/Yellow
U2516-36	PKG 3M-3-PSG 3M	3-pin	3 m	Extension	Straight	PVC/Yellow
U2516-35	PKG 3M-5-PSG 3M	3-pin	5 m	Extension	Straight	PVC/Yellow
U2503-14	PKG 4M-2	4-pin	2 m	Female	Straight	PVC/Yellow
U0058-10	PKG 4M-5	4-pin	5 m	Female	Straight	PVC/Yellow
U99-10780	PKG 4M-10	4-pin	10 m	Female	Straight	PVC/Yellow
U0136-00	PSG 4M-2	4-pin	2 m	Male	Straight	PVC/Yellow
U2-05064	PSG 4M-5	4-pin	5 m	Male	Straight	PVC/Yellow
U99-11342	PSG 4M-10	4-pin	10 m	Male	Straight	PVC/Yellow
U99-17490	PKG 4M-1-PSG 4M	4-pin	1 m	Extension	Straight	PVC/Yellow
U99-10815	PKG 4M-2-PSG 4M	4-pin	2 m	Extension	Straight	PVC/Yellow
U0875-24	PKG 4M-3-PSG 4M	4-pin	3 m	Extension	Straight	PVC/Yellow
U0881-44	PKG 4M-5-PSG 4M	4-pin	5 m	Extension	Straight	PVC/Yellow

M8 Connectivity Family

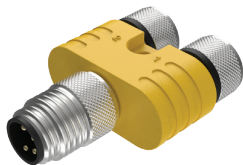
M8 Front Mount Receptacles



- Provides a mating point for M8 cables
- Male and female types
- Front mount with M8x0.5 mounting thread
- 3 and 4-pin versions

Material ID	Part Number	Pin Count	Lead Length (Meters)	Gender	Mounting Style	Mounting Thread
U1014-00	MFKS 3-1	3-pin	1	Female	Front	M8x0.5
U99-17667	MFSS 3-1	3-pin	1	Male	Front	M8x0.5
U99-17475	MFKS 4-1	4-pin	1	Female	Front	M8x0.5
U99-17478	MFSS 4-1	4-pin	1	Male	Front	M8x0.5

M8 Splitters



- M8 "Y" compact splitters
- Provides installation flexibility for industrial applications
- Rated IP67 for rugged environments
- Standard wiring for consolidation of two signals into one cable

Material ID	Part Number	Homerun Connector	Port Connectors
U0932-33	YP2-MFS 4/2MFK 3	Male 4-pin	Female 3-pin
U0117-1	VBRS 4.4-2SKM 3	Male 4-pin	Female 3-pin

M8 Connectivity Family

M8 Field Wireables



- M8 connection
- Rated voltage: 75 VDC 60 VAC
- M8 female or male connector versions
- Plastic housing
- Protection class: NEMA 1, 3, 4, 6P, IEC IP67

Material ID	Part Number	Pin Count	Gender	Cable Grip Range
U0879-54	B 5133-0	3-pin	Female	3.5-5 mm
U6512	BS 5133-0	3-pin	Male	3.5-5 mm
U0879-55	B 5143-0	4-pin	Female	3.5-5 mm
U6513	BS 5143-0	4-pin	Male	3.5-5 mm

M8 Closure Caps



- Dust/closure cap
- 8 per bag
- Black plastic
- Threaded Phillips head

Material ID	Part Number	Lanyard Style	Closure Cap Material	Mates to
U6427	PSGM-CC (8/BAG)	No lanyard	Black plastic	Female

M12 Connectivity Family

M12 Straight Cordsets - Black PVC Jacket/Black Plug Body

Turck's Focus+ product offering includes our popular M12 cordsets. The industry standard for years, these durable M12 cordsets are easy to install and stand up to harsh environments. Offered in 4, 5 and 8 pin counts. Maintain reliable data communication between devices, on machines and across networks. Multiple cable lengths offered to meet a variety of application needs.

- Assortment of cable types and wire gauge sizes to fit applications with a tight footprint
- Overmolded design
- Variants rated up to IP69K for washdown
- UL rated
- High flex rating



Material ID	Part Number	Pin Count	Cable Length	Gender	Orientation	Cable Type
U-29271	RK 4.4T-2/S760/S771	4-pin	2 m	Female	Straight	PVC/Black
U0930-80	RK 4.4T-5/S760/S771	4-pin	5 m	Female	Straight	PVC/Black
U-05651	RK 4.4T-10/S760/S771	4-pin	10 m	Female	Straight	PVC/Black
U-91282	RK 4.4T-15/S760/S771	4-pin	15 m	Female	Straight	PVC/Black
U-99270	RK 4.4T-20/S760/S771	4-pin	20 m	Female	Straight	PVC/Black
U-68435	RS 4.4T-2/S760/S771	4-pin	2 m	Male	Straight	PVC/Black
U-88140	RS 4.4T-5/S760/S771	4-pin	5 m	Male	Straight	PVC/Black
U-82562	RS 4.4T-10/S760/S771	4-pin	10 m	Male	Straight	PVC/Black
U-16009	RK 4.4T-1-RS 4.4T/S760/S771	4-pin	1 m	Extension	Straight	PVC/Black
U2-09882	RK 4.4T-2-RS 4.4T/S760/S771	4-pin	2 m	Extension	Straight	PVC/Black
U-11239	RK 4.4T-3-RS 4.4T/S760/S771	4-pin	3 m	Extension	Straight	PVC/Black
U-08473	RK 4.4T-5-RS 4.4T/S760/S771	4-pin	5 m	Extension	Straight	PVC/Black
U2-10000	RK 4.4T-10-RS 4.4T/S760/S771	4-pin	10 m	Extension	Straight	PVC/Black
U0969-33	RK 4.5T-2/S760/S771	5-pin	2 m	Female	Straight	PVC/Black
U-09403	RK 4.5T-5/S760/S771	5-pin	5 m	Female	Straight	PVC/Black
U-11621	RK 4.5T-10/S760/S771	5-pin	10 m	Female	Straight	PVC/Black
100033166	RK 4.5T-15/S760/S771	5-pin	15 m	Female	Straight	PVC/Black
U-58949	RK 4.5T-20/S760/S771	5-pin	20 m	Female	Straight	PVC/Black
U2-06189	RS 4.5T-2/S760/S771	5-pin	2 m	Male	Straight	PVC/Black

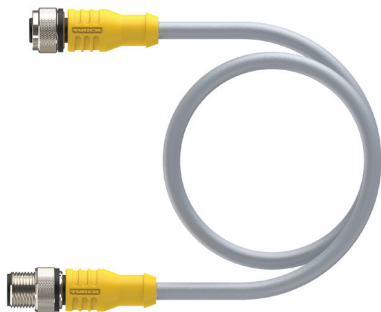
Continued on next page.

M12 Connectivity Family

M12 Straight Cordsets - Black PVC Jacket/Black Plug Body (Continued)

Material ID	Part Number	Pin Count	Cable Length	Gender	Orientation	Cable Type
U-88141	RS 4.5T-5/S760/S771	5-pin	5 m	Male	Straight	PVC/Black
U-75461	RS 4.5T-10/S760/S771	5-pin	10 m	Male	Straight	PVC/Black
U-79229	RK 4.5T-1-RS 4.5T/S760/S771	5-pin	1 m	Extension	Straight	PVC/Black
U0967-27	RK 4.5T-2-RS 4.5T/S760/S771	5-pin	2 m	Extension	Straight	PVC/Black
U-73552	RK 4.5T-3-RS 4.5T/S760/S771	5-pin	3 m	Extension	Straight	PVC/Black
U-79001	RK 4.5T-5-RS 4.5T/S760/S771	5-pin	5 m	Extension	Straight	PVC/Black
U-32671	RK 4.5T-10-RS 4.5T/S760/S771	5-pin	10 m	Extension	Straight	PVC/Black

M12 Straight Cordsets - Gray PVC Jacket/Yellow Plug Body

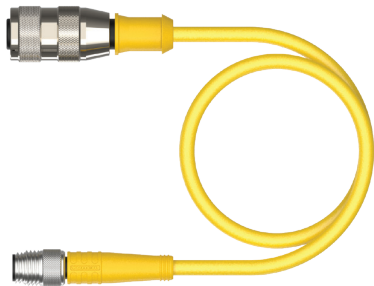


- Assortment of cable types and wire gauge sizes to fit applications with a tight footprint
- Overmolded design
- Variants rated up to IP69K for washdown
- UL rated
- High flex rating

Material ID	Part Number	Pin Count	Cable Length	Gender	Orientation	Cable Type
U5311-50	RKC 8T-2	8-pin	2 m	Female	Straight	PVC/Gray
U5311-52	RKC 8T-5	8-pin	5 m	Female	Straight	PVC/Gray
U5311-73	RKC 8T-10	8-pin	10 m	Female	Straight	PVC/Gray
U2143-66	RSC 8T-2	8-pin	2 m	Male	Straight	PVC/Gray
U0894-04	RSC 8T-5	8-pin	5 m	Male	Straight	PVC/Gray
U99-12502	RSC 8T-10	8-pin	10 m	Male	Straight	PVC/Gray
U5311-56	RKC 8T-2-RSC 8T	8-pin	2 m	Extension	Straight	PVC/Gray
U5312-32	RKC 8T-3-RSC 8T	8-pin	3 m	Extension	Straight	PVC/Gray
U0932-32	RKC 8T-5-RSC 8T	8-pin	5 m	Extension	Straight	PVC/Gray
U99-11861	RKC 8T-10-RSC 8T	8-pin	10 m	Extension	Straight	PVC/Gray

M12 Connectivity Family

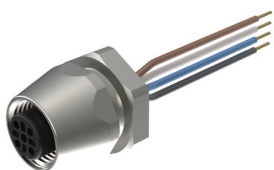
M8 to M12 Straight Cordsets – Yellow PVC Jacket/Yellow Plug Body



- Double-ended extension cordset
- 2 m length
- UL rated
- Overmolded design
- PVC jacket for durability

Material ID	Part Number	Pin Count	Cable Length	Gender	Orientation	Cable Type
U2151-04	RK 4T-2-PSG 3M	3-pin	2 m	Extension	Straight	PVC/Yellow
U2516-37	PKG 3M-2-RS 4T	3-pin	2 m	Extension	Straight	PVC/Yellow
U0875-88	RK 4.4T-2-PSG 4M	4-pin	2 m	Extension	Straight	PVC/Yellow
U0057-52	PKG 4M-2-RS 4.4T	4-pin	2 m	Extension	Straight	PVC/Yellow

M12 Receptacles



- 4, 5 or 8-pin options
- Nickel-plated brass or stainless-steel housing material
- Front, rear or feed-thru mounting options
- Rated for up to 250 V, 4 A
- NEMA 1, 3, 4, 6P and IEC IP68

Material ID	Part Number	Pin Count	Lead Length	Gender	Mounting Style	Mounting Thread
U9518-0	FK 4.4-1	4-pin	1 m	Female	Front	PG9
U5201-0	FK 4.4-3	4-pin	3 m	Female	Front	PG9
U2350-11	FS 4.4-1	4-pin	1 m	Male	Front	PG9
U9518	FK 4.4-1/18.25	4-pin	1 m	Female	Front	1/4-18NPT
U9507-0	FS 4.4-1/18.25	4-pin	1 m	Male	Front	1/4-18NPT
U4499-01	FKFD 4.4-1	4-pin	1 m	Female	Rear	PG9
U99-17469	FSFD 4.4-1	4-pin	1 m	Male	Rear	PG9
U1135-1	FK FS 4.4/M12	4-pin	N/A	Female to Male	Feed-thru	M12x1
U1114	FK 4.5-1	5-pin	1 m	Female	Front	PG9

Continued on next page.

M12 Connectivity Family

M12 Receptacles (Continued)

Material ID	Part Number	Pin Count	Lead Length	Gender	Mounting Style	Mounting Thread
U1113-2	FK 4.5-3	5-pin	3 m	Female	Front	PG9
U1110-1	FS 4.5-1	5-pin	1 m	Male	Front	PG9
U-52066	FK 4.5-1/18.25	5-pin	1 m	Female	Front	1/4-18NPT
U99-17457	FS 4.5-1/18.25	5-pin	1 m	Male	Front	1/4-18NPT
U99-17439	FKFD 4.5-1	5-pin	1 m	Female	Rear	PG9
U5118-62	FSFD 4.5-1	5-pin	1 m	Male	Rear	PG9
U1135	FK FS 4.5/M12	5-pin	N/A	Female to Male	Feed-thru	M12x1
U99-17433	FK 8-1	8-pin	1 m	Female	Front	PG9
U-05043	FK 8-3	8-pin	3 m	Female	Front	PG9
U99-17665	FS 8-1	8-pin	1 m	Male	Front	PG9
U99-17441	FKFD 8-1	8-pin	1 m	Female	Rear	PG9
U99-17471	FSFD 8-1	8-pin	1 m	Male	Rear	PG9
U1135-3	FK FS 8/M12	8-pin	N/A	Female to Male	Feed-thru	M12x1

M12 Splitters



- M12 size compact splitters for wiring consolidation
- Provides installation flexibility
- Standard wiring
- Rated IP67 for rugged environments

Material ID	Part Number	Homerun Connector	Port Connectors
U0098	VB2-FSM 4.4/2FKM 4	Male 4-wire	Female 3-wire
U2-07374	YBZ2-FSM4.4/2FK4	Male 4-wire	Female 3-wire
U0117	VBRS 4.4-2RK 4T-0.3/0.3	Male 4-wire	Female 3-wire
U0875-78	YB2-FSM 4.5-2FKM 4.5	Male 5-wire	Female 4-wire
U0932-69	YBZ2-FSM 4.5/2FKM 4.5/S771	Male 5-wire	Female 4-wire

M12 Connectivity Family

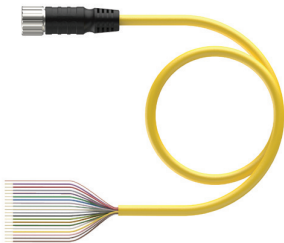
M12 Junction Box



- Rugged M12 junction box
- 10 – 30 VDC
- 8 ports with 2 signals per port
- PNP LEDs
- Rated up to IP69K when connected
- Side exit M23 home run connector

Material ID	Part Number
E8026482	8MB12Z-5P3-CS19H

M23 Homerun Cables



- Available in 5- & 10-meter lengths
- Yellow PVC cable jacket, black overmolded TPU plug body
- 19 pin count
- Rated IP67 for rugged applications
- Straight M23 connector

Material ID	Part Number	Pin Count	Cable Length	Gender
U4701-03	CKM 19-19-5	19-pin	5 m	Female
U4704-10	CKM 19-19-10	19-pin	10 m	Female

M12 Connectivity Family

M12 Field Wireables



- On-site termination for installation flexibility
- Quick disconnect when needed
- 4 or 5-pin
- Male or female options
- Screw terminal termination style
- Rated IP67

Material ID	Part Number	Pin Count	Gender	Cable Grip Range
U6545	B 8141-0	4-pin	Female	4-6 mm
U6547	B 8141-0/PG 9	4-pin	Female	6-8 mm
U6550	BS 8141-0	4-pin	Male	4-6 mm
U6551	BS 8141-0/PG 9	4-pin	Male	6-8 mm
U6565	B 8151-0/PG9	5-pin	Female	4-8 mm
U6570	BS 8151-0/PG9	5-pin	Male	4-8 mm

M12 Closure Caps



- Dust/closure cap
- Loop, eyelet, and no lanyard options
- Variants that mate to male or female

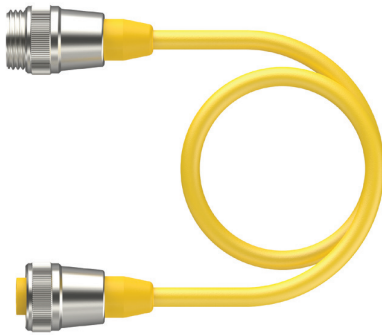
Material ID	Part Number	Lanyard Style	Closure Cap Material	Mates to
U5135-0	RK-CC	Loop	Nickel plated brass	Male
U5134-1	RS-CC	Loop	Nickel plated brass	Female
U0905-69	FK-CC	Eyelet	Nickel plated brass	Male
U0905-68	FS-CC	Eyelet	Nickel plated brass	Female
U0905-72	RK-MC	No lanyard	Nickel plated brass	Male
U0905-71	RS-MC	No lanyard	Nickel plated brass	Female
E7008	VZ 3 (8/BAG)	No lanyard	Plastic	Female

Minifast Connectivity Family

7/8" Minifast Straight Cordsets - Yellow PVC Jacket/Yellow Plug Body

Minifast cordsets come with a 7/8-inch connector and are ideal for rugged instrumentation applications. This selection of Focus+ cordsets offers a PVC jacket with extended agency approvals (Oil Res I/II, Tray rated) provide solutions for indoor and outdoor industrial environments. A variety of commonly used lengths makes selection easy. Male, female or extension versions provide flexibility.

- 3, 4 or 5-pin
- Male, female or extension versions
- Yellow PVC cable jacket
- 18 AWG wire options
- Rated for up to 9 A, 600 V
- NEMA 1, 3, 4, 6P and IEC IP67, IP68, IP69, IP69K



Material ID	Part Number	Pin Count	Cable Length	Gender	Orientation	Cable Type
U2027	RKM 30-2M	3-pin	2 m	Female	Straight	PVC/Yellow
U2029-0	RKM 30-5M	3-pin	5 m	Female	Straight	PVC/Yellow
U2032-0	RKM 30-10M	3-pin	10 m	Female	Straight	PVC/Yellow
U2075-2	RSM 30-2M	3-pin	2 m	Male	Straight	PVC/Yellow
U2255	RSM RKM 30-2M	3-pin	2 m	Extension	Straight	PVC/Yellow
U2043	RKM 40-2M	4-pin	2 m	Female	Straight	PVC/Yellow
U2045-05	RKM 40-5M	4-pin	5 m	Female	Straight	PVC/Yellow
U2048	RKM 40-10M	4-pin	10 m	Female	Straight	PVC/Yellow
U2132	RKM 40-15M	4-pin	15 m	Female	Straight	PVC/Yellow
U2084-1	RSM 40-2M	4-pin	2 m	Male	Straight	PVC/Yellow
U2280-0	RSM RKM 40-2M	4-pin	2 m	Extension	Straight	PVC/Yellow
U2281	RSM RKM 40-5M	4-pin	5 m	Extension	Straight	PVC/Yellow
U2281-1	RSM RKM 40-10M	4-pin	10 m	Extension	Straight	PVC/Yellow
U2281-13	RSM RKM 40-15M	4-pin	15 m	Extension	Straight	PVC/Yellow
U2282-02	RSM RKM 40-20M	4-pin	20 m	Extension	Straight	PVC/Yellow
U2056	RKM 50-2M	5-pin	2 m	Female	Straight	PVC/Yellow
U2059	RKM 50-5M	5-pin	5 m	Female	Straight	PVC/Yellow

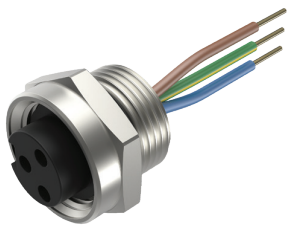
Continued on next page.

Minifast Connectivity Family

7/8" Minifast Straight Cordsets - Yellow PVC Jacket/Yellow Plug Body (Continued)

Material ID	Part Number	Pin Count	Cable Length	Gender	Orientation	Cable Type
U2060	RKM 50-10M	5-pin	10 m	Female	Straight	PVC/Yellow
U2091	RSM 50-2M	5-pin	2 m	Male	Straight	PVC/Yellow
U2282-0	RSM RKM 50-2M	5-pin	2 m	Extension	Straight	PVC/Yellow
U2282	RSM RKM 50-5M	5-pin	5 m	Extension	Straight	PVC/Yellow
U2283	RSM RKM 50-10M	5-pin	10 m	Extension	Straight	PVC/Yellow

7/8" Minifast Front Mount Receptacles



- 3, 4 or 5-pin
- 1 or 3-meter lead length
- 18 AWG wire options
- Front mount
- Rated for up to 9 A, 600 V
- NEMA 1, 3, 4, 6P and IEC IP67, IP68, IP69, IP69K

Material ID	Part Number	Pin Count	Lead Length	Gender	Mounting Style	Mounting Thread
U2456	RKF 30-1M	3-pin	1 m	Female	Front	1/2-14NPSM
U-03364	RKF 30-3M	3-pin	3 m	Female	Front	1/2-14NPSM
U0931-04	RKF 30-1M/NPT	3-pin	1 m	Female	Front	1/2-14NPT
U-09371	RKF 30-3M/NPT	3-pin	3 m	Female	Front	1/2-14NPT
U2306-2	RSF 30-1M	3-pin	1 m	Male	Front	1/2-14NPSM
U-01080	RSF 30-1M/NPT	3-pin	1 m	Male	Front	1/2-14NPT
U2303-1	RKF 40-1M	4-pin	1 m	Female	Front	1/2-14NPSM
U2303-3	RKF 40-3M	4-pin	3 m	Female	Front	1/2-14NPSM
U0884-85	RKF 40-1M/NPT	4-pin	1 m	Female	Front	1/2-14NPT
U0930-49	RKF 40-3M/NPT	4-pin	3 m	Female	Front	1/2-14NPT
U2347	RSF 40-1M	4-pin	1 m	Male	Front	1/2-14NPSM
U0909-79	RSF 40-1M/NPT	4-pin	1 m	Male	Front	1/2-14NPT
U2335	RKF 50-1M	5-pin	1 m	Female	Front	1/2-14NPSM
U2335-3	RKF 50-3M	5-pin	3 m	Female	Front	1/2-14NPSM
U0893-90	RKF 50-1M/NPT	5-pin	1 m	Female	Front	1/2-14NPT
U-00147	RKF 50-3M/NPT	5-pin	3 m	Female	Front	1/2-14NPT
U2309-39	RSF 50-1M	5-pin	1 m	Male	Front	1/2-14NPSM
U0902-55	RSF 50-1M/NPT	5-pin	1 m	Male	Front	1/2-14NPT

Minifast Connectivity Family

7/8" Minifast Tees



- 7/8" connectors, integral to tee body
- 3, 4 and 5-pin options
- Parallel wiring
- Rated for up to 250 V, 9 A
- NEMA 1, 3, 4, 6P and IEC IP67

Material ID	Part Number	Pin Count
U1061	RSM-2RKM 30	3-pin
U0140	RSM-2RKM 40	4-pin
U2109-9	RSM-2RKM 50	5-pin

7/8" Minifast Field Wireables

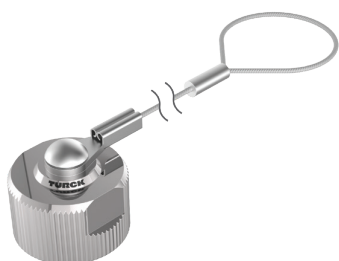


- Easy on-site termination provides installation flexibility
- 3, 4 or 5-pin
- Male or female
- 6-8 mm and 10-12 mm cable diameter range
- Rated for up to 12 A, 250 V
- IEC IP67

Material ID	Part Number	Pin Count	Gender	Cable Grip Range
U6310-1	B 4131-0/13.5	3-pin	Female	10-12 mm
U6315-1	BS 4131-0/13.5	3-pin	Male	10-12 mm
U6410	B 4141-0/9	4-pin	Female	6-8 mm
U6415	BS 4141-0/9	4-pin	Male	6-8 mm
U6413	B 4141-0/13.5	4-pin	Female	10-12 mm
U6415-0	BS 4141-0/13.5	4-pin	Male	10-12 mm
U6420	B 4151-0/13.5	5-pin	Female	10-12 mm
U6422	BS 4151-0/13.5	5-pin	Male	10-12 mm

Minifast Connectivity Family

7/8" Minifast Closure Caps



- Dust/closure cap
- Fits 7/8-inch
- Loop and eyelet style
- Threaded, hand tighten
- Stainless steel cap
- Nitrile gasket and o-ring

Material ID	Part Number	Lanyard Style	Closure Cap Material	Mates to
U5135	RKM-CC	Loop	Nickel plated brass	Male
U5134	RSM-CC	Loop	Nickel plated brass	Female
U0899-34	RKF-CC	Eyelet	Nickel plated brass	Male
U0899-35	RSF-CC	Eyelet	Nickel plated brass	Female

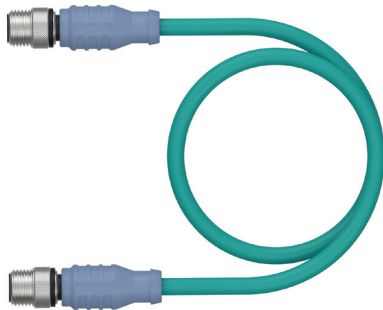


Ethernet Connectivity Family

Industrial Ethernet Straight Cordsets - Teal TPE Jacket/Blue-Gray Plug Body

Our Focus+ family of straight cordsets/cable assemblies are ideal for communication networks in industrial environments. Turck's cordsets are rugged solutions, reliably transmitting data between machines and devices. They come in either M12 or RJ45 connector combinations with a secure overmolded plug body that protects against vibration. These cables offer up to IP69K ingress protection for washdown or harsh applications. Both shielded and unshielded versions are offered in a variety of cable lengths as part of the Focus+ program.

- Industrial TPE cable jacket
- Overmolded plug body
- 4 and 8-pin types
- Excellent oil resistance
- M12 and RJ45 combinations
- Simplifies network commissioning



Material ID	Part Number	Pin Count	Termination Type	Cable Length	Orientation	Cable Type
U-04470	RSCD RSCD 440-0.5M	4-pin	M12/M12	0.5 m	Straight	440 - Stranded Unshielded/2UTPx24AWG
U3-00042	RSCD RSCD 440-1M	4-pin	M12/M12	1 m	Straight	440 - Stranded Unshielded/2UTPx24AWG
U-04468	RSCD RSCD 440-2M	4-pin	M12/M12	2 m	Straight	440 - Stranded Unshielded/2UTPx24AWG
U-06818	RSCD RSCD 440-3M	4-pin	M12/M12	3 m	Straight	440 - Stranded Unshielded/2UTPx24AWG
U-04465	RSCD RSCD 440-5M	4-pin	M12/M12	5 m	Straight	440 - Stranded Unshielded/2UTPx24AWG
U-04466	RSCD RSCD 440-10M	4-pin	M12/M12	10 m	Straight	440 - Stranded Unshielded/2UTPx24AWG
U-09763	RSCD RSCD 440-15M	4-pin	M12/M12	15 m	Straight	440 - Stranded Unshielded/2UTPx24AWG
U-09261	RSCD RSCD 440-20M	4-pin	M12/M12	20 m	Straight	440 - Stranded Unshielded/2UTPx24AWG
U-12214	RSSD RSSD 441-0.5M	4-pin	M12/M12	0.5 m	Straight	441 - Stranded Shielded/2UTPx24AWG
U3-00372	RSSD RSSD 441-1M	4-pin	M12/M12	1 m	Straight	441 - Stranded Shielded/2UTPx24AWG
U-02482	RSSD RSSD 441-2M	4-pin	M12/M12	2 m	Straight	441 - Stranded Shielded/2UTPx24AWG
U-02483	RSSD RSSD 441-3M	4-pin	M12/M12	3 m	Straight	441 - Stranded Shielded/2UTPx24AWG
U-06867	RSSD RSSD 441-5M	4-pin	M12/M12	5 m	Straight	441 - Stranded Shielded/2UTPx24AWG
U-06712	RSSD RSSD 441-10M	4-pin	M12/M12	10 m	Straight	441 - Stranded Shielded/2UTPx24AWG
U-04901	RSSD RSSD 441-15M	4-pin	M12/M12	15 m	Straight	441 - Stranded Shielded/2UTPx24AWG
U-03619	RSSD RSSD 441-20M	4-pin	M12/M12	20 m	Straight	441 - Stranded Shielded/2UTPx24AWG
U3-00406	RSSD RJ45S 441-0.5M	4-pin	M12/RJ45	0.5 m	Straight	441 - Stranded Shielded/2UTPx24AWG
U3-00504	RSSD RJ45S 441-1M	4-pin	M12/RJ45	1 m	Straight	441 - Stranded Shielded/2UTPx24AWG

Continued on next page.

Ethernet Connectivity Family

Industrial Ethernet Straight Cordsets - Teal TPE Jacket/Blue-Gray Plug Body (Continued)

Material ID	Part Number	Pin Count	Termination Type	Cable Length	Orientation	Cable Type
U3-00525	RSSD RJ45S 441-2M	4-pin	M12/RJ45	2 m	Straight	441 - Stranded Shielded/2UTPx24AWG
U-02423	RSSD RJ45S 441-3M	4-pin	M12/RJ45	3 m	Straight	441 - Stranded Shielded/2UTPx24AWG
U3-00588	RSSD RJ45S 441-5M	4-pin	M12/RJ45	5 m	Straight	441 - Stranded Shielded/2UTPx24AWG
U-02557	RSSD RJ45S 441-10M	4-pin	M12/RJ45	10 m	Straight	441 - Stranded Shielded/2UTPx24AWG
U-08737	RSSD RJ45S 441-15M	4-pin	M12/RJ45	15 m	Straight	441 - Stranded Shielded/2UTPx24AWG
U-02773	RSSD RJ45S 441-20M	4-pin	M12/RJ45	20 m	Straight	441 - Stranded Shielded/2UTPx24AWG
U-06863	RJ45S FKSDDED 441-0.5M	4-pin	M12/M12	0.5 m	Straight	441 - Stranded Shielded/2UTPx24AWG
U-03569	RJ45S FKSDDED 441-1M	4-pin	M12/M12	1 m	Straight	441 - Stranded Shielded/2UTPx24AWG
U3-00229	RJ45S FKSDDED 441-2M	4-pin	M12/M12	2 m	Straight	441 - Stranded Shielded/2UTPx24AWG
U-05458	RJ45S RJ45S 441-0.5M	4-pin	RJ45/RJ45	0.5 m	Straight	441 - Stranded Shielded/2UTPx24AWG
U-06865	RJ45S RJ45S 441-1M	4-pin	RJ45/RJ45	1 m	Straight	441 - Stranded Shielded/2UTPx24AWG
U-06842	RJ45S RJ45S 441-2M	4-pin	RJ45/RJ45	2 m	Straight	441 - Stranded Shielded/2UTPx24AWG
U-06843	RJ45S RJ45S 441-3M	4-pin	RJ45/RJ45	3 m	Straight	441 - Stranded Shielded/2UTPx24AWG
U3-00689	RJ45S RJ45S 441-5M	4-pin	RJ45/RJ45	5 m	Straight	441 - Stranded Shielded/2UTPx24AWG
U-09405	RJ45S RJ45S 441-10M	4-pin	RJ45/RJ45	10 m	Straight	441 - Stranded Shielded/2UTPx24AWG
U-04691	RJ45S RJ45S 441-15M	4-pin	RJ45/RJ45	15 m	Straight	441 - Stranded Shielded/2UTPx24AWG
U-04692	RJ45S RJ45S 441-20M	4-pin	RJ45/RJ45	20 m	Straight	441 - Stranded Shielded/2UTPx24AWG
U8636-05	RJ45S RJ45S 841-0.5M	8-pin	RJ45/RJ45	0.5 m	Straight	841 - Stranded Shielded/4UTPx24AWG
U8636-1	RJ45S RJ45S 841-1M	8-pin	RJ45/RJ45	1 m	Straight	841 - Stranded Shielded/4UTPx24AWG
U8636-2	RJ45S RJ45S 841-2M	8-pin	RJ45/RJ45	2 m	Straight	841 - Stranded Shielded/4UTPx24AWG
U8636-3	RJ45S RJ45S 841-3M	8-pin	RJ45/RJ45	3 m	Straight	841 - Stranded Shielded/4UTPx24AWG
U8636-5	RJ45S RJ45S 841-5M	8-pin	RJ45/RJ45	5 m	Straight	841 - Stranded Shielded/4UTPx24AWG
U8636-10	RJ45S RJ45S 841-10M	8-pin	RJ45/RJ45	10 m	Straight	841 - Stranded Shielded/4UTPx24AWG

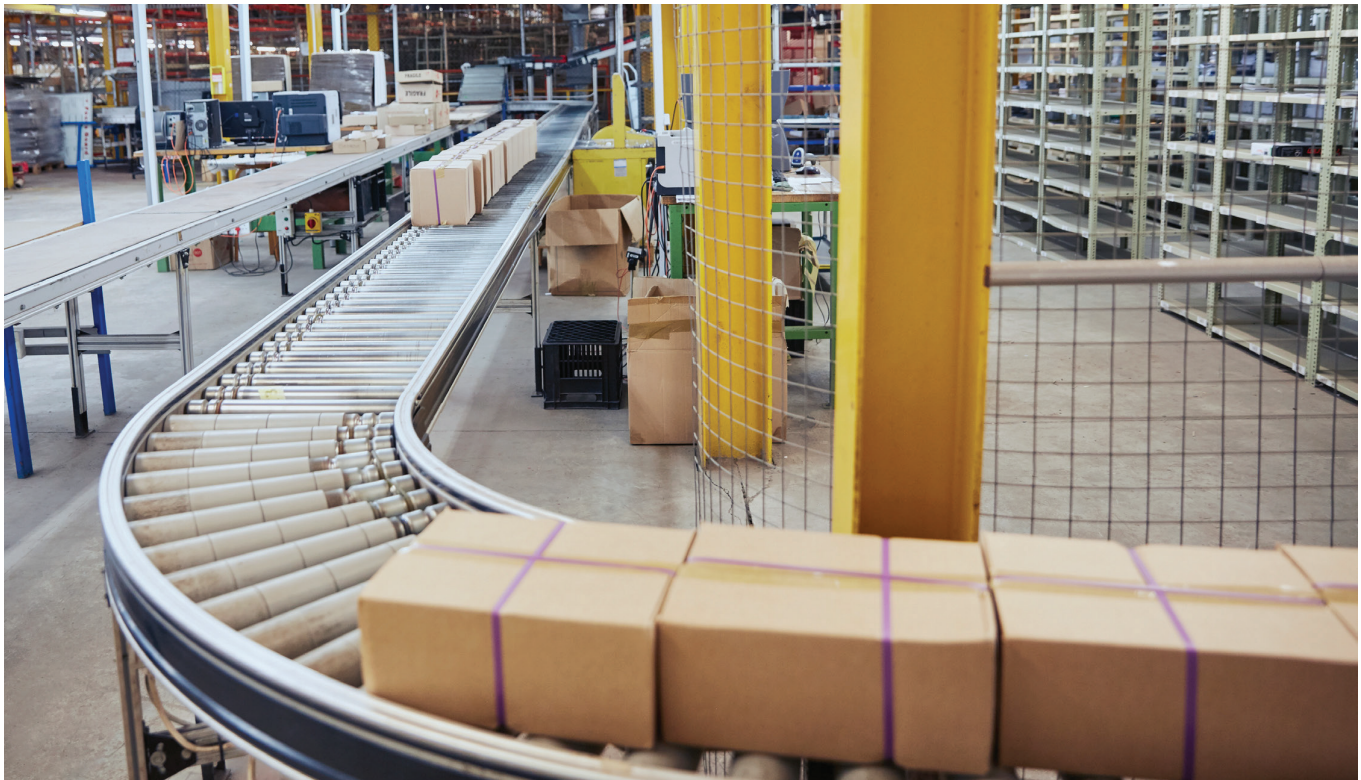
Ethernet Connectivity Family

Ethernet Panel, Receptacles & Field Wireable Accessories



- Convert RJ45 to M12 to transition out of the panel
- 4 and 8-pin types
- Field wireables for both M12 and RJ45
- Receptacles for PCB applications

Material ID	Part Number	Pin Count	Termination Type	Mounting Style	Mounting Thread	Cable Grip Range
U2-32077	FKSD FKSD 44/M12	4-Pin	M12/M12	Feed-thru	PG9	NA
U2-21428	FKSDD RJ45SF 44/ST	4-Pin	M12/RJ45	Feed-thru	M16x1.5	NA
U3-00647	FKSDD RJ45SF 44	4-Pin	M12/RJ45	Feed-thru	M16x1.5	NA
U2-03887	CMBSD 8141-0/PG9	4-Pin	M12	Field wireable	NA	6-8 mm
U2-22253	RJ45 PANEL MOUNT W IP67 CAP	8-Pin	RJ45/RJ45	Feed-thru	M22	NA
U2-18467	CONNECTOR, FW,RJ45S 84 IDC	8-Pin	RJ45	Field wireable	NA	5.5-9 mm

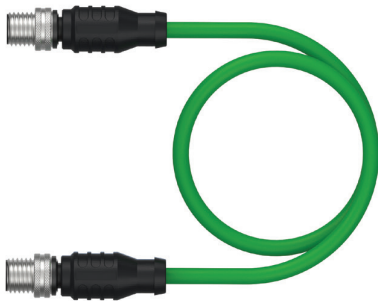


PROFINET Connectivity Family

PROFINET Straight Cordsets – Green TPE Jacket/Black Plug Body

Get real-time data exchange between devices with Turck's Focus+ selection of PROFINET double-ended cordsets. Choose from a variety of lengths in straight, stranded/shielded cables with 4-pin M12 connectors. These cordsets/cable assemblies have a flexible TPE jacket and are resistant to UV, chemicals and extreme temperatures. Ideal for high-speed data exchange.

- 4-pin M12 connectors
- Overmolded design for reliability
- 1 – 15 meter cable lengths
- 22 AWG
- Rated IP67 for harsh environments



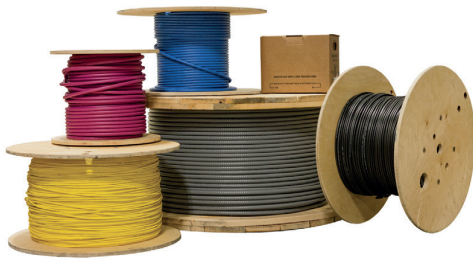
Material ID	Part Number	Pin Count	Termination Type	Cable Length	Orientation	Cable Type
U-38542	RSSD RSSD 423-1M	4-pin	M12/M12	1 m	Straight	423 - Stranded Shielded/2UTPx22AWG
U-45540	RSSD RSSD 423-2M	4-pin	M12/M12	2 m	Straight	423 - Stranded Shielded/2UTPx22AWG
U-50806	RSSD RSSD 423-3M	4-pin	M12/M12	3 m	Straight	423 - Stranded Shielded/2UTPx22AWG
U-50316	RSSD RSSD 423-5M	4-pin	M12/M12	5 m	Straight	423 - Stranded Shielded/2UTPx22AWG
U-53423	RSSD RSSD 423-10M	4-pin	M12/M12	10 m	Straight	423 - Stranded Shielded/2UTPx22AWG
U-56122	RSSD RSSD 423-15M	4-pin	M12/M12	15 m	Straight	423 - Stranded Shielded/2UTPx22AWG

Industrial Cable

Cut to Length Cable

Turck's most popular industrial cables are part of our Focus+ program. Available in 30, 75, and 150 meters, you'll get more flexibility and minimize waste on a wide range of raw cable products. Turck's cut-to-length cable allows you to order specific lengths and a selection of jacket colors for different applications, making installation simpler. Wire gauge ranges from 18 – 26 AWG.

- Easier cable management and reduces costs
- Variety of jacket colors and gauges available
- Multiple certifications for application flexibility



Material ID	Part Number	# of Conductors	AWG	Jacket Material	Jacket Color	Type	Cable Length
200012894	RF50880-30M	3	18	PVC	Yellow	General	30 m
200012915	RF50880-75M	3	18	PVC	Yellow	General	75 m
200012924	RF50880-150M	3	18	PVC	Yellow	General	150 m
200012892	RF50642-30M	3	24	PVC	Yellow	General	30 m
200012913	RF50642-75M	3	24	PVC	Yellow	General	75 m
200012922	RF50642-150M	3	24	PVC	Yellow	General	150 m
200012900	RF50548-30M	4	18	PVC	Yellow	General	30 m
200012902	RF50548-75M	4	18	PVC	Yellow	General	75 m
200012904	RF50548-150M	4	18	PVC	Yellow	General	150 m
200012889	RF50530-30M	4	22	PVC	Yellow	General	30 m
200012910	RF50530-75M	4	22	PVC	Yellow	General	75 m
200012920	RF50530-150M	4	22	PVC	Yellow	General	150 m
200012896	RF50983-30M	4	22	PVC	Black	General	30 m
200012916	RF50983-75M	4	22	PVC	Black	General	75 m
200012926	RF50983-150M	4	22	PVC	Black	General	150 m
200012898	RF51211-30M	4	24	TPE	Teal	CAT5E	30 m
200012918	RF51211-75M	4	24	TPE	Teal	CAT5E	75 m
200012928	RF51211-150M	4	24	TPE	Teal	CAT5E	150 m
200012897	RF51210-30M	4	24	TPE	Teal	CAT5E	30 m
200012917	RF51210-75M	4	24	TPE	Teal	CAT5E	75 m
200012927	RF51210-150M	4	24	TPE	Teal	CAT5E	150 m

Continued on next page.

Industrial Cable

Cut to Length Cable (Continued)

Material ID	Part Number	# of Conductors	AWG	Jacket Material	Jacket Color	Type	Cable Length
200012893	RF50697-30M	4	26	PVC	Yellow	General	30 m
200012914	RF50697-75M	4	26	PVC	Yellow	General	75 m
200012923	RF50697-150M	4	26	PVC	Yellow	General	150 m
200012891	RF50549-30M	5	18	PVC	Yellow	General	30 m
200012912	RF50549-75M	5	18	PVC	Yellow	General	75 m
200012905	RF50549-150M	5	18	PVC	Yellow	General	150 m
200012890	RF50543-30M	5	22	PVC	Gray	General	30 m
200012911	RF50543-75M	5	22	PVC	Gray	General	75 m
200012921	RF50543-150M	5	22	PVC	Gray	General	150 m
200012895	RF50893-30M	8	24	TPE	Teal	CAT5E	30 m
200012903	RF50893-75M	8	24	TPE	Teal	CAT5E	75 m
200012925	RF50893-150M	8	24	TPE	Teal	CAT5E	150 m
200012901	RF52026-30M	8	26	TPE	Teal	CAT6A	30 m
200012919	RF52026-75M	8	26	TPE	Teal	CAT6A	75 m
200012929	RF52026-150M	8	26	TPE	Teal	CAT6A	150 m

Inductive Proximity Sensors

Turck's Focus+ inductive proximity sensors come in a range of popular sizes, including our compact 12 mm barrel for short sensing distances. These rugged sensors are designed to detect metal targets in a range of applications for non-contact monitoring of metal flaps on machines, metal valve positioning, detect if metal parts are in place and much more. They are ideally suited for harsh environments and many have high IP ratings.

- 2 mm – 8 mm sensing distance, depending on variant
- Embeddable and non-embeddable versions
- Wide operating temperature range
- Variants with IO-Link
- Washdown versions available

Inductive Sensors, 12 mm Barrel



Material ID	Part Number	Body Style	Sensing Range	Operating Voltage	Output	Operating Temperature Range	Special Features
46065	BI2-M12-AP6X-H1141	12 mm Barrel	2 mm	10-30 VDC	3 wire DC, PNP	-25...+70 °C	Embeddable
46066	BI2-M12-AN6X-H1141	12 mm Barrel	2 mm	10-30 VDC	3 wire DC, NPN	-25...+70 °C	Embeddable
4405041	BI3-M12-AD4X-H1141	12 mm Barrel	3 mm	10-65 VDC	2 wire DC, PNP	-25...+70 °C	Embeddable
46070	BI4-M12-AP6X-H1141	12 mm Barrel	4 mm	10-30 VDC	3 wire DC, PNP	-25...+70 °C	Embeddable
46071	BI4-M12-AN6X-H1141	12 mm Barrel	4 mm	10-30 VDC	3 wire DC, NPN	-25...+70 °C	Embeddable
1634804	BI4U-M12-AP6X-H1141	12 mm Barrel	4 mm	10-30 VDC	3 wire DC, PNP	-30...+85 °C	Uprox, Embeddable
100015372	BI4U-EM12WD-IOL6X2-H1141	12 mm Barrel	4 mm	10-30 VDC	4 wire DC, PNP/ NPN, NO/NC	-40...+100 °C	Uprox, IO-Link, Wash Down, Embeddable
46067	NI4-M12-AP6X-H1141	12 mm Barrel	4 mm	10-30 VDC	3 wire DC, PNP	-25...+70 °C	Non-embeddable
46068	NI4-M12-AN6X-H1141	12 mm Barrel	4 mm	10-30 VDC	3 wire DC, NPN	-25...+70 °C	Non-embeddable
1644140	NI8U-M12-AP6X-H1141	12 mm Barrel	8 mm	10-30 VDC	3 wire DC, PNP	-30...+85 °C	Uprox, Non-embeddable

Inductive Proximity Sensors

Turck's Focus+ program includes our 18 mm diameter inductive proximity sensors in a chrome-plated brass threaded barrel housing. Ideal for detecting metal targets, inductive sensors from Turck are built to last even in the harsh environments found in heavy industrial plants and factories. Get improved sensing performance and a long service life with these popular sensors.

- 5 mm – 10 mm sensing distance, depending on variant
- Embeddable and non-embeddable versions
- Wide operating temperature range
- Variant with IO-Link
- Washdown versions available

Inductive Sensors, 18 mm Barrel



Material ID	Part Number	Body style	Sensing Range	Operating Voltage	Output	Operating Temperature Range	Special Features
46145	BI5-M18-AP6X-H1141	18 mm Barrel	5 mm	10-30 VDC	3 wire DC, PNP	-25...+70 °C	Embeddable
46146	BI5-M18-AN6X-H1141	18 mm Barrel	5 mm	10-30 VDC	3 wire DC, NPN	-25...+70 °C	Embeddable
4414541	BI7-M18-AD4X-H1141	18 mm Barrel	7 mm	10-65 VDC	2 wire DC, PNP	-25...+70 °C	Embeddable
46150	BI8-M18-AP6X-H1141	18 mm Barrel	8 mm	10-30 VDC	3 wire DC, PNP	-25...+70 °C	Embeddable
1644731	BI8U-M18-AP6X-H1141	18 mm Barrel	8 mm	10-30 VDC	3 wire DC, PNP	-30...+85 °C	Embeddable
4615100	BI8-M18-AN6X-H1141	18 mm Barrel	8 mm	10-30 VDC	3 wire DC, NPN	-25...+70 °C	Embeddable
100006589	BI8U-EM18WD-IOL6X2-H1141	18 mm Barrel	8 mm	10-30 VDC	4 wire DC, PNP/NPN, NO/NC	-40...+100 °C	Uprox, IO-Link, Wash Down
1644830	BI10U-M18-AP6X-H1141	18 mm Barrel	10 mm	10-30 VDC	3 wire DC, PNP	-25...+70 °C	Uprox, Embeddable
46147	NI8-M18-AP6X-H1141	18 mm Barrel	8 mm	10-30 VDC	3 wire DC, PNP	-25...+70 °C	Non-embeddable

Inductive Proximity Sensors

For proximity detection applications that need an extended sensing range, our 30 mm diameter inductive sensors provide 10 – 20 mm of range. Choose from five different 30 mm sensors in this family as part of our Focus+ program. These sensors are ideal for detecting metal targets were the sensor needs to be installed further away such as in packaging, warehouses or monitoring machine parts.

- 10 mm – 20 mm sensing distance, depending on variant
- Embeddable and non-embeddable versions
- Wide operating temperature range
- Variant with IO-Link
- Washdown versions available

Inductive Sensors, 30 mm Barrel



Material ID	Part Number	Body style	Sensing Range	Operating Voltage	Output	Operating Temperature Range	Special Features
4617511	BI10-M30E-AP6X-H1141	30 mm Barrel	10 mm	10-30 VDC	3 wire DC, PNP	-25...+70 °C	Embeddable
46185	BI15-M30-AP6X-H1141	30 mm Barrel	15 mm	10-30 VDC	3 wire DC, PNP	-25...+70 °C	Embeddable
4618600	BI15-M30-AN6X-H1141	30mm Barrel	15 mm	10-30 VDC	3 wire DC, NPN	-25...+70 °C	Embeddable
10000266	BI15U-EM30WD-IOL6X2-H1141	30mm Barrel	15 mm	10-30 VDC	4 wire DC, PNP/NPN, NO/NC	-40...+100 °C	Uprox, IO-Link, Wash Down, Embeddable
4670510	NI20-M30-AP6X-H1141	30 mm Barrel	20 mm	10-30 VDC	3 wire DC, PNP	-25...+70 °C	Non-embeddable



Inductive Proximity Sensors

When a rectangular form-factor or longer range is needed, Turck's Focus+ program includes a selection of inductive proximity sensors to fit those longer-distance applications such as on conveyors or in welding applications where the sensor needs to be installed at a greater distance or to monitor a wider area. Inductive sensors from Turck are built to last even in the harsh environments found in heavy industrial plants and factories, ensuring a long service life.

- 15 mm – 75 mm sensing distance, depending on variant
- Embeddable and non-embeddable versions
- Wide operating temperature range

Inductive Sensors, Rectangular



Material ID	Part Number	Body Style	Sensing Range	Operating Voltage	Output	Operating Temperature Range	Special Features
1625090	BI15-CK40-AP6X2-H1141 W/BS2.1	40 mm x 40 mm, Rectangular	15 mm	10-30 VDC	3 wire DC, PNP	-25...+70 °C	Embeddable
1625689	BI15U-CK40-AP6X2-H1141 W/BS2.1	40 mm x 40 mm, Rectangular	15 mm	10-30 VDC	3 wire DC, PNP	-30...+85 °C	Uprox
13410	BI15-CP40-FZ3X2/S10	40mm x 40 mm, Rectangular	15 mm	20-250 VAC, 10-30 VDC	2 wire AC/DC, PNP	-25...+70 °C	Terminal Chamber, 1/2-14 NPT Threads
1625800	NI35U-CK40-AP6X2-H1141	40 mm x 40 mm, Rectangular	35 mm	10-30 VDC	3 wire DC, PNP	-25...+70 °C	Uprox, Non-embeddable
1625857	NI75U-Q80-VP4X2-H1141	92 mm x 80 mm, Rectangular	75 mm	10-65 VDC	4 wire DC, PNP	-25...+70 °C	Uprox, Non-embeddable
1623805	NI75U-CP80-AP6X2-H1141	80 mm x 80 mm, Rectangular	75 mm	10-30 VDC	3 wire DC, PNP	-30...+85 °C	Uprox, Non-embeddable

Fieldbus Solutions

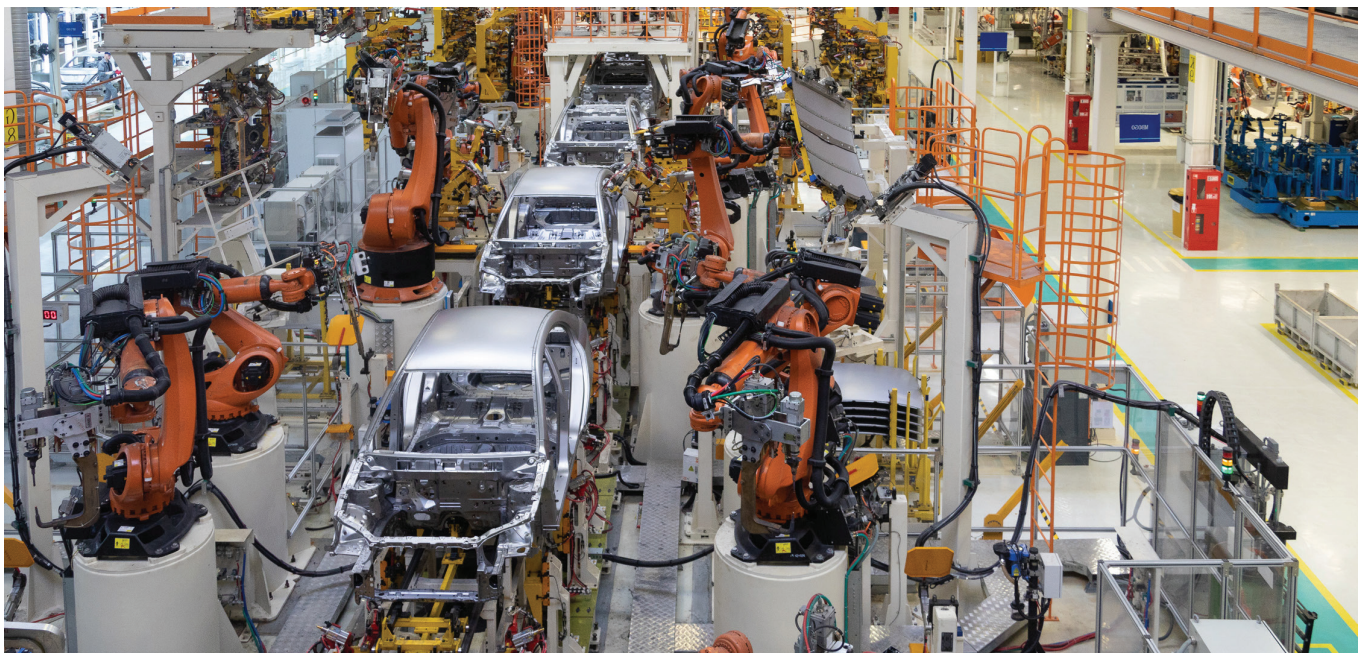
Turck's Focus+ TBEN-L4-16DXP I/O module for Ethernet is a rugged IP67-rated device that connect networks, sensors, and other devices for reliable control and communication. The FEN20-16DXP is rated IP20 and is ideal for control cabinets. Multiprotocol capability in both devices reduces the number of components needed in stock since it works with Ethernet/IP, PROFINET or Modbus TCP.

- 16 configurable channels
- Multiprotocol functionality automatically senses which protocol to use
- Integrated Ethernet switch
- Compact form factor for application flexibility

Compact Multiprotocol I/O Module & Station



Material ID	Part Number	Protocol	Functionality	Inputs	Outputs	In/Out Configurable	IP Rating
6814012	TBEN-L4-16DXP	Multiprotocol (EIP/Modbus/Profinet)	Multiprotocol Digital In/Out Device	0	0	16	IP67
6931089	FEN20-16DXP	Multiprotocol (EIP/Modbus/Profinet)	Multiprotocol Digital In/Out Device	0	0	16	IP20



Fieldbus Solutions

The multiprotocol IO-Link masters that are part of our Focus+ program provide a flexible solution for emerging IoT applications. These devices support a range of protocols, including Ethernet/IP, PROFINET or Modbus TCP. Turck's IO-Link masters can be installed in a control cabinet or directly in the field as remote I/O, depending on the model chosen.

- Offers 4 - 8 master channels, depending on model
- Serves as a gateway between the IO-Link devices and a control system
- Multiprotocol functionality automatically senses which protocol to use
- Integrated web server

Multiprotocol IO-Link Master



Material ID	Part Number	Protocol	Functionality	Inputs	Outputs	In/Out Configurable	IP Rating
6814082	TBEN-L4-8IOL	Multiprotocol (EIP/Modbus/Profinet)	Multiprotocol IO-Link Master (8 channel)	8 (No IOL)	4	4	IP67
6814140	FEN20-4IOL	Multiprotocol (EIP/Modbus/Profinet)	Multiprotocol IO-Link Master (4 channel)	0	0	4 (No IOL)	IP20

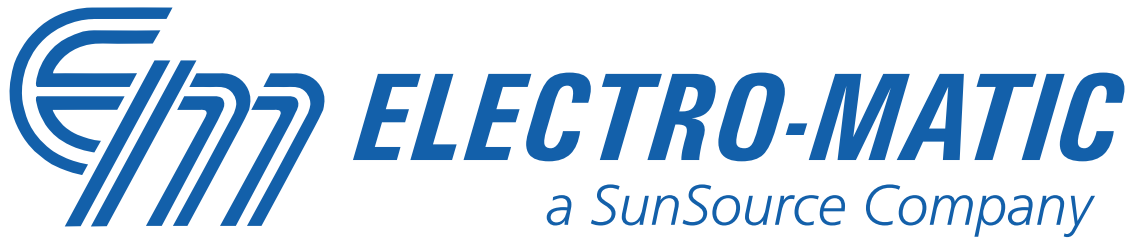
Turck's Focus+ IO-Link hubs are a compact, cost-effective choice for decentralized automation applications. Sensors and actuators can be connected to the hub with a standard cable with an M12 connector (TBIL). Hubs also simplify wiring and engineering efforts.

- Connects digital signals to an IO-Link master
- 8 - 16 digital channels, depending on model
- Solutions for in cabinet (IP20) or on machine (IP65-69K)
- 18 - 30 VDC

IO-Link Hubs



Material ID	Part Number	Protocol	Functionality	Inputs	Outputs	In/Out Configurable	IP Rating
6814102	TBIL-M1-16DXP	IO-Link	IO-Link Hub	0	0	16	IP67
100005646	FIL20-8DXP	IO-Link	IO-Link Hub	0	0	8	IP20



Detroit
248-478-1182

Grand Rapids
248-478-1182

Cleveland
248-478-1182

Memphis
901-545-3780

Tampa
813-774-5935

Orlando
813-774-5935

Jacksonville
813-774-5935

Miami
813-774-5935